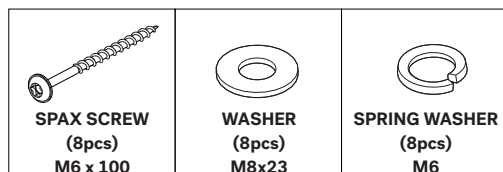


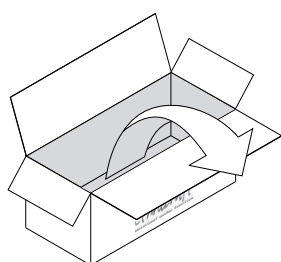
BOK DINING TABLE - OUTDOOR

ASSEMBLY INSTRUCTIONS FOR DINING TABLE INSTALLATION

HARDWARE ENCLOSED



TOOL

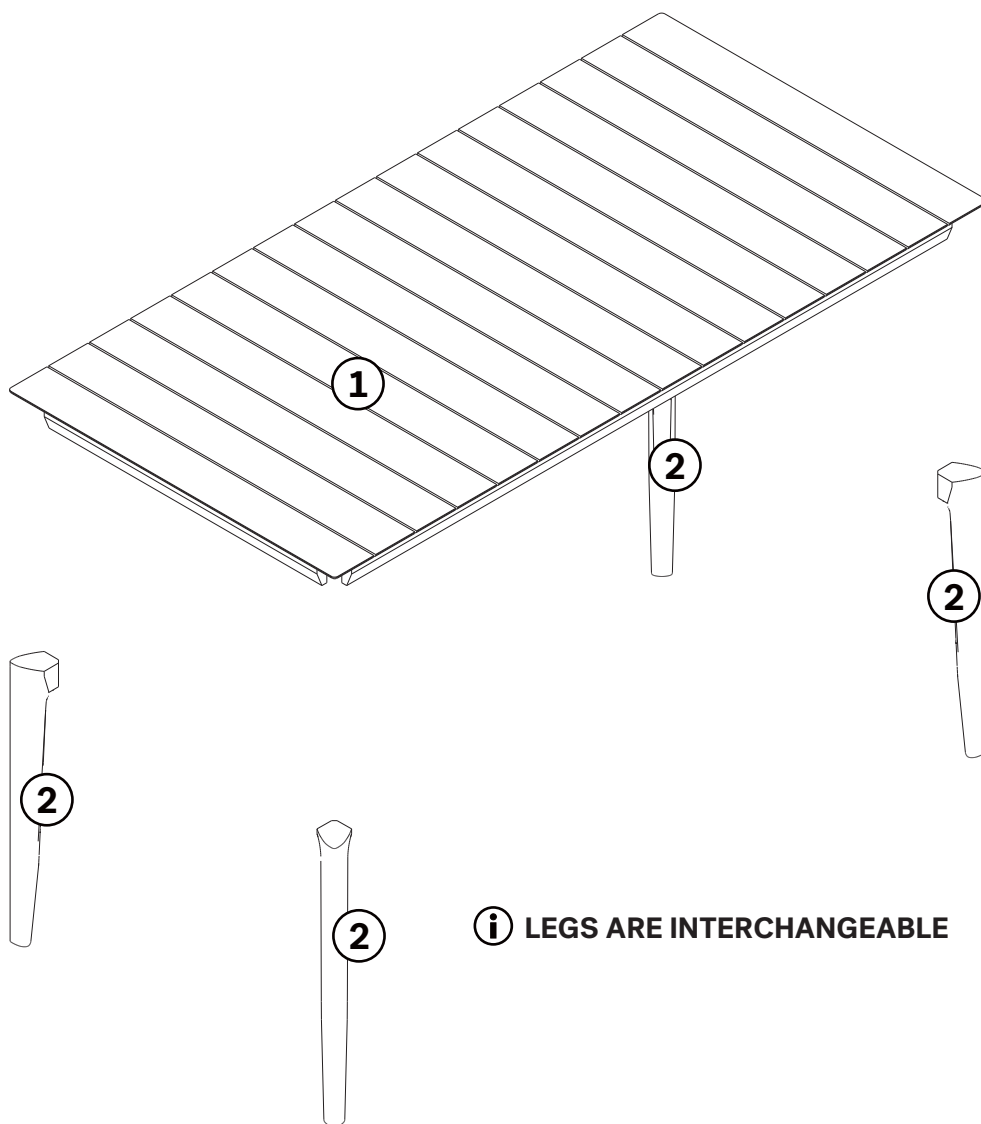


IN YOUR PACKAGE :

ASSEMBLY INSTRUCTIONS
HARDWARE (AS LISTED ABOVE)

PARTS TO BE INSTALLED

1. TABLE TOP 1pc
2. LEGS 4pcs

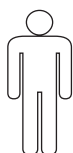


i LEGS ARE INTERCHANGEABLE

SYMBOLS



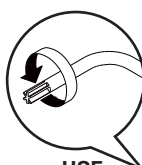
DIRECTION



NUMBER OF
PERSONS NEEDED

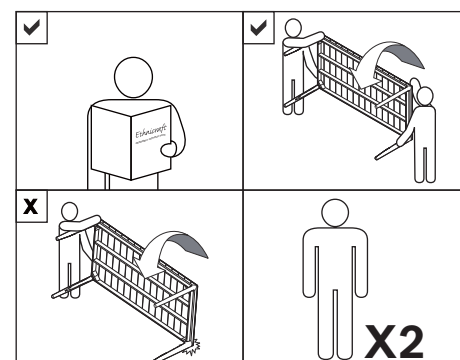


USE HAND



USE
TORX ALLEN SCREW
TO TIGHTEN

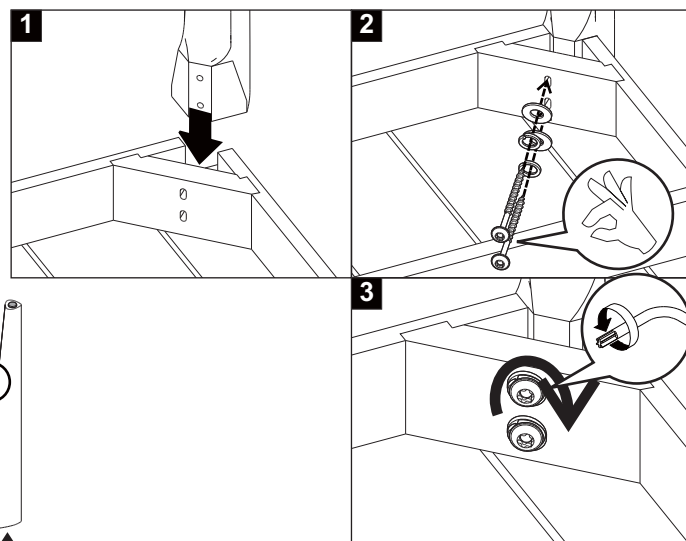
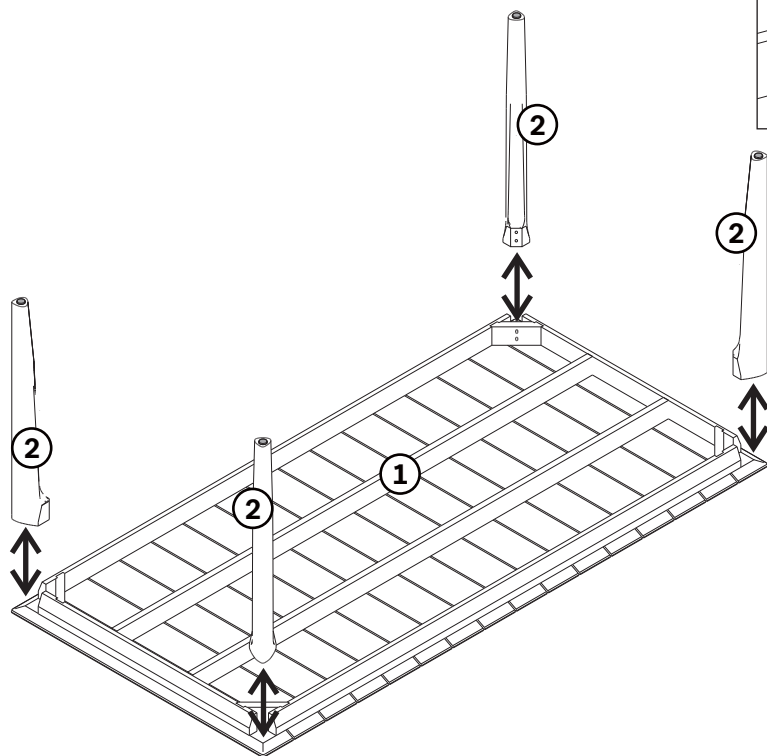
NOTICE



BOK DINING TABLE - OUTDOOR

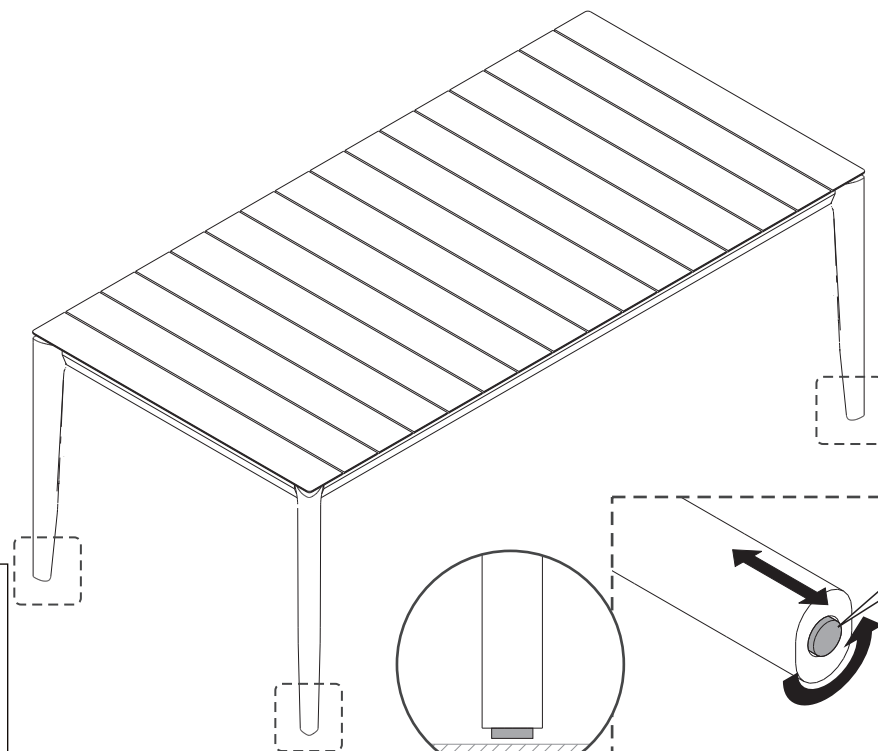
ASSEMBLY INSTRUCTIONS FOR DINING TABLE INSTALLATION

A. CONNECTING LEGS TO TABLE TOP

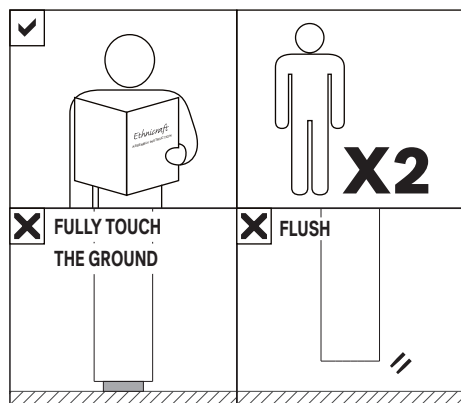


- NOT TOO TIGHT
- TO BE RE-TIGHTENED AFTER 15 DAYS
- REPEAT STEP 1 TO STEP 3 FOR OTHER LEGS

B. ADJUST LEVELER



NOTICE



IMPORTANT NOTICE :

TO PREVENT WARPING, BEFORE USING A TABLE,
ALWAYS ADAPT THE ADJUSTABLE GLIDES OF THE EACH LEGS TO THE GROUND SURFACE.
FOR STABILITY, EACH LEGS NEED TO BE SLIGHTLY SHORTER.